

# More, More, More: The pressures in education

Turns out, students like online learning. They want more of it, and schools are under pressure to deliver. But that's not the only challenge educational institutions face.

**More personalised:** Pressure is mounting to up the quality of student-centric learning opportunities and make them more rewarding for faculty too

**More caring:** Prevailing expectations are that academic institutions will help students graduate by creating a nurturing community with lots of supportive tools

**More safe:** The expanding threat landscape -- both in cyber and physical space -- makes the need to defend against all potential threats even more urgent

## 18%

Fewer than one in five students wants to return to fully in-person courses<sup>1</sup>

## 30%

Number of higher education leaders who say their university only offers fully in-person courses<sup>2</sup>



## Student-centric service delivery

A modern campus network makes it easy and efficient to securely support large volumes of users, data, devices, applications and systems end-to-end across wired and wireless networks, including off-campus locations. It also provides fast access to the high-capacity bandwidth to support applications and services that improve student success from every perspective.

Modern campus networks are designed to be secure, reliable and high performing. Which ensures that course delivery is consistently high-quality – on and off campus. Doors open to a whole mix of pedagogical opportunities:

- **Empower** students and faculty with digital learning tools and technologies
- **Engage** with more interactive educational experiences
- **Inject** more HD video, virtual reality, augmented reality
- **Support** more personalised learning pedagogy and 1:1 device classrooms
- **Adopt** more science, technology, engineering, arts and mathematics curricula



## Wellness promotion

The pressure to succeed both at school and in society is enormous. Now add the stress and uncertainty of the past few years, plus inflation's impact on rent, food and tuition, and we have created a powder keg of anxiety.

More wellness tools are possible with a modern network.

- **Online campus communities make it easy to:**
  - Collaborate and communicate
  - Engage in meaningful activities
  - Connect with other students
- **Digital nudge technologies provide reminders and alerts that:**
  - Keep students on track
  - Help students feel valued

## 90%

Report finds mental health supports needed in more than 90 per cent of Ontario schools<sup>3</sup>

## 60%

of teens with depression did not get help in the past year<sup>4</sup>

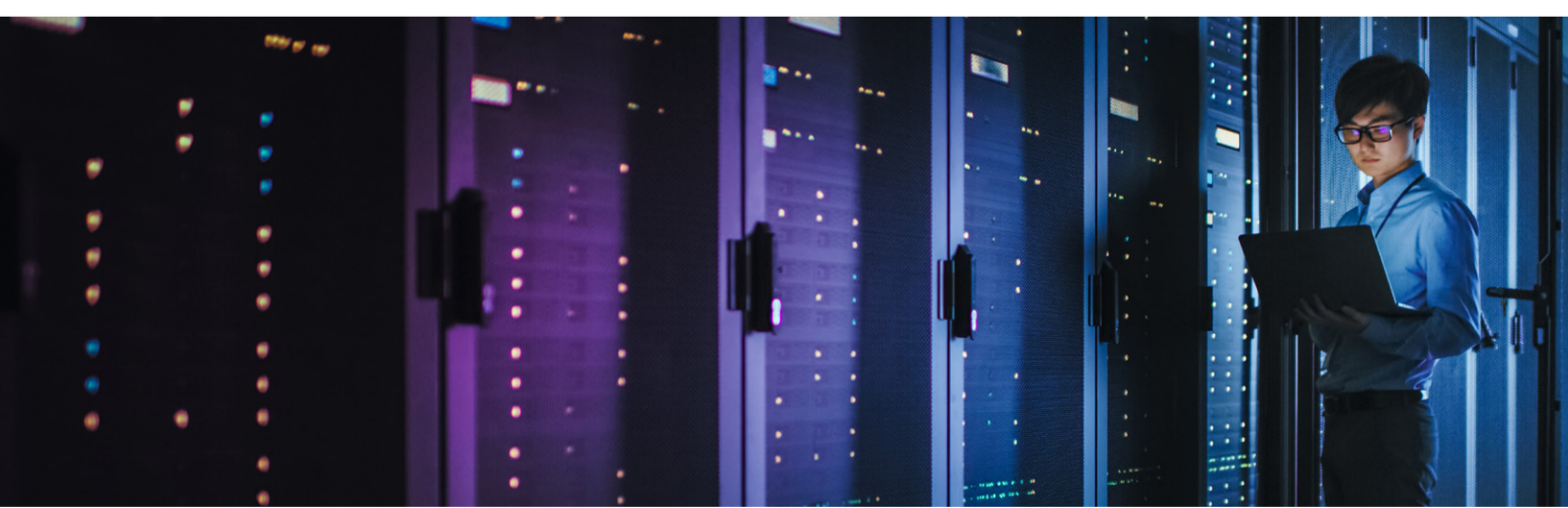
## 57%

Teen girls who said they'd felt persistently sad or hopeless in 2021<sup>5</sup>

## Campus safety and resilience

Technologies that protect physical safety and secure personal data and course content are crucial. A secure and reliable, high-capacity, high-speed network meets these requirements.

- **Collective safety:** Instantly alert students and staff to emergency events with mass notification systems
- **Individual safety:** Implement panic buttons, safety hotlines and alarms and monitor through a campus-wide safety dashboard
- **Campus resilience:** Deliver online learning and critical campus services during and after unexpected events and emergencies. And protect against unauthorised network access with robust cybersecurity mechanisms
- *"Ransomware attack shuts 157-year-old Lincoln College."*<sup>6</sup>



## Build your school up, too

The modern campus network also helps educational institutions streamline operations and reduce costs.

IT teams get a single, automated network and a single point of management that eliminates operational complexity and accelerates task completion.

And schools can demonstrate that they are a safe, caring and future-oriented environment that values students and staff. That's a great brand to build.

Ensure that personalised learning is always secure, reliable, high performance and empowered by a safe, high-quality and future-oriented network.

**Learn how ALE education solutions can help your institution modernise its network, or contact us today to discuss your specific needs.**

### Sources

1. [If Students Had Their Way, Hybrid Learning Would Be Here To Stay](#)
2. [Ibid](#)
3. [Mental health supports needed in more than 90 per cent of Ontario schools, report finds](#)
4. [Mental Health in Schools](#)
5. [The Kids Aren't Alright](#)
6. <https://www.cbsnews.com/news/lincoln-college-closes-ransomware-hackers-illinois/>